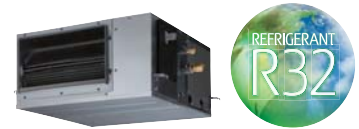


2020-21 MEDIUM STATIC DUCTED SPLITS - R32

Medium Static Pressure Duct Compact & Comfort - Single Phase

Static Pressure Range 30 to 200 PA, Standard 35Pa



| Indoor Unit Outdoor Unit | | ARXG12KHTAP AOYG12KBTB | ARXG14KHTAP AOYG14KBTB | ARXG18KHTAP AOYG18KBTB |
|--|-------|---------------------------|---------------------------|---------------------------|
| Nominal Cooling Capacity (Range) | kW | 3.5 (0.9 - 4.4) | 4.3 (0.9 - 5.4) | 5.2 (0.9 - 5.9) |
| UK Cooling (Total / Sensible) | kW | 3.39 / 2.96 | 4.12 / 3.53 | 5.01 / 4.09 |
| Nominal Heating Capacity (Range) | kW | 4.1 (0.9 - 5.7) | 5.0 (0.9 - 6.5) | 6.0 (0.9 - 7.5) |
| UK Heating | kW | 5.06 | 5.80 | 6.64 |
| EER Cooling / COP Heating | | 4.02 / 4.10 | 3.68 / 4.00 | 3.82 / 3.85 |
| SEER / Energy Efficiency Class - Cooling | | 6.30 / A++ | 6.20 / A++ | 6.50 / A++ |
| SCOP / Energy Efficiency Class - Heating | | 4.10 / A+ | 4.00 / A+ | 4.10 / A+ |
| Annual Energy Consumption Cool / Heat | kWh/a | 194 / 1,159 | 243 / 1,328 | 280 / 1,501 |
| Pdesign Cooling / Heating (-10°C) | kW | 3.5 / 3.4 | 4.3 / 3.8 | 5.2 / 4.4 |
| Indoor Dimensions (H x W x D) | mm | 300x700x700 | 300x700x700 | 300x1,000x700 |
| Outdoor Dimensions (H x W x D) | mm | 542x799x290 | 542x799x290 | 632x799x290 |
| Weight Indoor / Outdoor | kg | 27.0 / 33.0 | 27.0 / 33.0 | 35.0 / 36.0 |
| Sound Pressure Level Indoor - min/max | dB(A) | 24 / 32 | 25 / 33 | 20 / 28 |
| Pipe Size (Liquid - Gas) | mm | 1/4" - 3/8" | 1/4" - 3/8" | 1/4" - 1/2" |
| Max Pipe Len. (Precharge) / Height Diff. | m | 25 (15) / 20 | 25 (15) / 20 | 30 (20) / 20 |
| Additional Refrigerant Charge | g/m | 20 | 20 | 20 |
| Ref. Type (Global Warming Potential) | | R32 (675) | R32 (675) | R32 (675) |
| Refrigerant Charge kg / CO2eq-T | | 0.85 / 0.574 | 0.85 / 0.574 | 1.02 / 0.689 |
| Power Source / Suggested Fuse Size | | 1Ph-230V-50Hz / 10 | 1Ph-230V-50Hz / 16 | 1Ph-230V-50Hz / 16 |

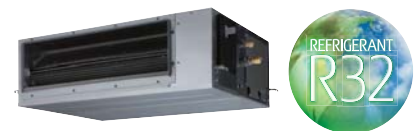
Remote Controller (UTYRNRZY3)
Long Life Filer Kit (UTDLFNC/B)

System operating range, -15°C to 46°C Cooling -15°C to 24°C Heating

Medium Static Pressure Duct Compact & Comfort - Single Phase

Size 22 & 24 Static Pressure Range 30 to 200 PA, Standard 35Pa

Size 30 Static Pressure Range 30 to 200 PA, Standard 47Pa



| Indoor Unit Outdoor Unit | | ARXG22KHTAP AOYG22KBTB | ARXG24KHTAP AOYG24KBTB | ARXG30KHTAP AOYG30KBTB |
|--|-------|---------------------------|---------------------------|---------------------------|
| Nominal Cooling Capacity (Range) | kW | 6.0 (0.9 - 6.7) | 6.8 (0.9 - 8.0) | 8.5 (2.8 - 10.0) |
| UK Cooling (Total / Sensible) | kW | 5.85 / 4.75 | 6.63 / 5.13 | 8.08 / 6.39 |
| Nominal Heating Capacity (Range) | kW | 7.0 (0.9 - 8.0) | 7.5 (0.9 - 9.1) | 10.0 (2.7 - 11.2) |
| UK Heating | kW | 6.91 | 7.86 | 9.63 |
| EER Cooling / COP Heating | | 3.51 / 3.87 | 3.60 / 4.06 | 3.21 / 3.80 |
| SEER / Energy Efficiency Class - Cooling | | 6.50 / A++ | 6.50 / A++ | 6.23 / A++ |
| SCOP / Energy Efficiency Class - Heating | | 4.20 / A+ | 4.10 / A+ | 4.00 / A+ |
| Annual Energy Consumption Cool / Heat | kWh/a | 323 / 1,597 | 366 / 2,048 | 477 / 2,796 |
| Pdesign Cooling / Heating (-10°C) | kW | 6.0 / 4.8 | 6.8 / 6.0 | 8.5 / 8.0 |
| Indoor Dimensions (H x W x D) | mm | 300x1,000x700 | 300x1,000x700 | 300x1,000x700 |
| Outdoor Dimensions (H x W x D) | mm | 632x799x290 | 716x820x315 | 788x940x320 |
| Weight Indoor / Outdoor | kg | 35.0 / 38.0 | 36.0 / 42.0 | 36.0 / 52.0 |
| Sound Pressure Level Indoor - min/max | dB(A) | 20 / 28 | 21 / 32 | 29 / 36 |
| Pipe Size (Liquid - Gas) | mm | 1/4" - 1/2" | 1/4" - 1/2" | 3/8" - 5/8" |
| Max Pipe Len. (Precharge) / Height Diff. | m | 30 (20) / 25 | 30 (20) / 25 | 50 (30) / 30 |
| Additional Refrigerant Charge | g/m | 20 | 20 | 40 |
| Ref. Type (Global Warming Potential) | | R32 (675) | R32 (675) | R32 (675) |
| Refrigerant Charge kg / CO2eq-T | | 1.25 / 0.844 | 1.25 / 0.844 | 1.90 / 1.283 |
| Power Source / Suggested Fuse Size | | 1Ph-230V-50Hz / 16 | 1Ph-230V-50Hz / 16 | 1Ph-230V-50Hz / 25 |

Remote Controller (UTYRNRZY3)
Long Life Filer Kit (UTDLFNB)

System operating range, -15°C to 46°C Cooling -15°C to 24°C Heating

Medium Static Pressure Duct Compact & Comfort - Single Phase

Size 36, Static Pressure Range 30 to 200 PA, Standard 47Pa

Size 45 & 54, Static Pressure Range 30 to 200 PA, Standard 60Pa



| Indoor Unit Outdoor Unit | | ARXG36KHTAP AOYG36KBTB | ARXG45KHTAP AOYG45KBTB | ARXG54KHTAP AOYG54KBTB |
|--|-------|---------------------------|---------------------------|---------------------------|
| Nominal Cooling Capacity (Range) | kW | 9.5 (2.8 - 11.2) | 12.1 (4.0 - 14.0) | 13.4 (4.5 - 14.5) |
| UK Cooling (Total / Sensible) | kW | 9.03 / 7.50 | 11.54 / 9.52 | 12.78 / 10.04 |
| Nominal Heating Capacity (Range) | kW | 10.8 (2.7 - 12.7) | 13.5 (4.2 - 16.2) | 15.5 (4.7 - 16.5) |
| UK Heating | kW | 10.92 | 13.83 | 15.02 |
| EER Cooling / COP Heating | | 3.32 / 4.35 | 3.43 / 4.01 | 3.03 / 3.98 |
| SEER / Energy Efficiency Class - Cooling | | 6.10 / A++ | 5.83 / - | 5.81 / - |
| SCOP / Energy Efficiency Class - Heating | | 4.20 / A+ | 3.87 / - | 3.85 / - |
| Annual Energy Consumption Cool / Heat | kWh/a | 544 / 2,898 | - / - | - / - |
| Pdesign Cooling / Heating (-10°C) | kW | 9.5 / 8.7 | - / - | - / - |
| Indoor Dimensions (H x W x D) | mm | 300x1,400x700 | 300x1,400x700 | 300x1,400x700 |
| Outdoor Dimensions (H x W x D) | mm | 788x940x320 | 998x940x320 | 998x940x320 |
| Weight Indoor / Outdoor | kg | 46.0 / 52.0 | 46.0 / 67.0 | 46.0 / 67.0 |
| Sound Pressure Level Indoor - min/max | dB(A) | 26 / 36 | 29 / 39 | 29 / 39 |
| Pipe Size (Liquid - Gas) | mm | 3/8" - 5/8" | 3/8" - 5/8" | 3/8" - 5/8" |
| Max Pipe Len. (Precharge) / Height Diff. | m | 50 (30) / 30 | 50 (30) / 30 | 50 (30) / 30 |
| Additional Refrigerant Charge | g/m | 40 | 40 | 40 |
| Ref. Type (Global Warming Potential) | | R32 (675) | R32 (675) | R32 (675) |
| Refrigerant Charge kg / CO2eq-T | | 1.90/ 1.283 | 2.70/ 1.823 | 2.70/ 1.823 |
| Power Source / Suggested Fuse Size | | 1Ph-230V-50Hz / 25 | 1Ph-230V-50Hz / 32 | 1Ph-230V-50Hz / 25 |

Remote Controller (UTYRNRZY3)
Long Life Filer Kit (UTDLFNA)

System operating range, -15°C to 46°C Cooling -15°C to 24°C Heating

Medium Static Pressure Duct Compact & Comfort - Three Phase

Size 36, Static Pressure Range 30 to 200 PA, Standard 47Pa

Size 45 & 54, Static Pressure Range 30 to 200 PA, Standard 60Pa



| Indoor Unit Outdoor Unit | | ARXG36KHTAP AOYG36KRTA | ARXG45KHTAP AOYG45KRTA | ARXG54KHTAP AOYG54KRTA |
|--|-------|---------------------------|---------------------------|---------------------------|
| Nominal Cooling Capacity (Range) | kW | 9.5 (2.8 - 11.2) | 12.1 (4.0 - 14.0) | 13.4 (4.5 - 14.5) |
| UK Cooling (Total / Sensible) | kW | 9.03 / 7.50 | 11.54 / 9.52 | 12.78 / 10.04 |
| Nominal Heating Capacity (Range) | kW | 10.8 (2.7 - 12.7) | 13.5 (4.2 - 16.2) | 15.5 (4.7 - 16.5) |
| UK Heating | kW | 10.92 | 14.74 | 15.02 |
| EER Cooling / COP Heating | | 3.32 / 4.35 | 3.43 / 4.01 | 3.03 / 3.98 |
| SEER / Energy Efficiency Class - Cooling | | 6.10 / A++ | 5.83 / - | 5.81 / - |
| SCOP / Energy Efficiency Class - Heating | | 4.20 / A+ | 3.87 / - | 3.85 / - |
| Annual Energy Consumption Cool / Heat | kWh/a | 544 / 2,898 | - / - | - / - |
| Pdesign Cooling / Heating (-10°C) | kW | 9.5 / 8.7 | - / - | - / - |
| Indoor Dimensions (H x W x D) | mm | 300x1,400x700 | 300x1,400x700 | 300x1,400x700 |
| Outdoor Dimensions (H x W x D) | mm | 788x940x320 | 998x940x320 | 998x940x320 |
| Weight Indoor / Outdoor | kg | 46.0 / 53.0 | 46.0 / 67.0 | 46.0 / 67.0 |
| Sound Pressure Level Indoor - min/max | dB(A) | 26 / 36 | 29 / 39 | 29 / 39 |
| Pipe Size (Liquid - Gas) | mm | 3/8" - 5/8" | 3/8" - 5/8" | 3/8" - 5/8" |
| Max Pipe Len. (Precharge) / Height Diff. | m | 50 (30) / 30 | 50 (30) / 30 | 50 (30) / 30 |
| Additional Refrigerant Charge | g/m | 40 | 40 | 40 |
| Ref. Type (Global Warming Potential) | | R32 (675) | R32 (675) | R32 (675) |
| Refrigerant Charge kg / CO2eq-T | | 1.90/ 1.283 | 2.70/ 1.823 | 2.70/ 1.823 |
| Power Source / Suggested Fuse Size | | 3Ph-400V-50Hz / 16 | 3Ph-400V-50Hz / 16 | 3Ph-400V-50Hz / 16 |

Remote Controller (UTYRNRZY3)
Long Life Filer Kit (UTDLFNA)

System operating range, -15°C to 46°C Cooling -15°C to 24°C Heating

2020-21 MEDIUM STATIC DUCTED SPLITS - R32

Economy Range Medium Static Pressure Ducted - Single Phase

Size 22 & 24, Static Pressure Range 30 to 150 PA, Standard 35Pa

Size 30, Static Pressure Range 30 to 150 PA, Standard 47Pa



| Indoor Unit | | ARXG22KMLA | ARXG24KMLA | ARXG30KMLA |
|--|-------|--------------------|--------------------|--------------------|
| Outdoor Unit | | AOYG22KATA | AOYG24KATA | AOYG30KATA |
| Nominal Cooling Capacity (Range) | kW | 6.0(0.9 - 6.3) | 6.8(0.9 - 7.4) | 8.5(2.8 - 9.6) |
| UK Cooling (Total / Sensible) | kW | 5.65 / 4.23 | 6.63 / 4.86 | 8.08 / 6.23 |
| Nominal Heating Capacity (Range) | kW | 7.0(0.9 - 7.4) | 7.5(0.9 - 8.6) | 10.0(2.7 - 10.8) |
| UK Heating | kW | 6.37 | 7.43 | 9.29 |
| EER Cooling / COP Heating | | 3.13 / 3.50 | 3.11 / 3.75 | 3.06 / 3.61 |
| SEER / Energy Efficiency Class - Cooling | | 5.80 / A+ | 5.90 / A+ | 5.80 / A+ |
| SCOP / Energy Efficiency Class - Heating | | 3.80 / A | 3.90 / A | 3.90 / A |
| Annual Energy Consumption Cool / Heat | kWh/a | 362 / 1,620 | 403 / 1,935 | 513 / 2,871 |
| Pdesign Cooling / Heating (-10°C) | kW | 6.0 / 4.4 | 6.8 / 5.4 | 8.5 / 8.0 |
| Indoor Dimensions (H x W x D) | mm | 270×1,135×700 | 270×1,135×700 | 270×1,135×700 |
| Outdoor Dimensions (H x W x D) | mm | 632×799×290 | 632×799×290 | 788×940×320 |
| Weight Indoor / Outdoor | kg | 35.0 / 36.0 | 35.0 / 38.0 | 38.0 / 52.0 |
| Sound Pressure Level Indoor - min/max | dB(A) | 25 / 31 | 25 / 31 | 26 / 42 |
| Pipe Size (Liquid - Gas) | mm | 1/4" - 1/2" | 1/4" - 1/2" | 3/8" - 5/8" |
| Max Pipe Len. (Precharge) / Height Diff. | m | 25 (15) / 20 | 25(20) / 20 | 30(30) / 30 |
| Additional Refrigerant Charge | g/m | 20 | 20 | 0 |
| Ref. Type (Global Warming Potential) | | R32(675) | R32(675) | R32(675) |
| Refrigerant Charge kg / CO2eq-T | | 1.1/ 0.743 | 1.25/ 0.844 | 1.90/ 1.283 |
| Power Source / Suggested Fuse Size | | 1Ph-230V-50Hz / 16 | 1Ph-230V-50Hz / 16 | 1Ph-230V-50Hz / 25 |
| t | | | | |
| Remote Controller (UTYRNRZY3) | | | | |
| Filter UTDLF25NA / Spigot UTDRF204 | | | | |

System operating range, -10°C to 46°C Cooling -15°C to 24°C Heating

Economy Range Medium Static Pressure Ducted - Single & Three Phase

Size 36, Static Pressure Range 30 to 150 PA, Standard 47Pa

Size 45, Static Pressure Range 30 to 150 PA, Standard 60Pa



| Indoor Unit | | ARXG36KMLA | ARXG45KMLA | ARXG36KMLA | ARXG45KMLA |
|--|-------|--------------------|--------------------|--------------------|--------------------|
| Outdoor Unit | | AOYG36KATA | AOYG45KATA | AOYG36KQTA | AOYG45KQTA |
| Nominal Cooling Capacity (Range) | kW | 9.5(2.8 - 10.6) | 12.1(4.0 - 12.6) | 9.5(2.8 - 10.6) | 12.1(4.0 - 12.6) |
| UK Cooling (Total / Sensible) | kW | 9.03 / 6.83 | 11.54 / 8.64 | 9.03 / 6.83 | 11.54 / 8.64 |
| Nominal Heating Capacity (Range) | kW | 10.8(2.7 - 12.5) | 13.5(4.2 - 15.0) | 10.8(2.7 - 12.5) | 13.5(4.2 - 15.0) |
| UK Heating | kW | 10.75 | 13.65 | 10.75 | 13.65 |
| EER Cooling / COP Heating | | 3.04 / 3.56 | 2.50 / 3.23 | 3.04 / 3.56 | 2.50 / 3.23 |
| SEER / Energy Efficiency Class - Cooling | | 5.60 / A+ | - / - | 5.60 / A+ | 4.85 / - |
| SCOP / Energy Efficiency Class - Heating | | 3.90 / A | - / - | 3.90 / A | 3.55 / - |
| Annual Energy Consumption Cool / Heat | kWh/a | 594 / 3,122 | - / - | 594 / 3,122 | - / - |
| Pdesign Cooling / Heating (-10°C) | kW | 9.5 / 8.7 | - / - | 9.5 / 8.7 | - / - |
| Indoor Dimensions (H x W x D) | mm | 270×1,135×700 | 270×1,135×700 | 270×1,135×700 | 270×1,135×700 |
| Outdoor Dimensions (H x W x D) | mm | 788×940×320 | 998×940×320 | 788×940×320 | 998×940×320 |
| Weight Indoor / Outdoor | kg | 38.0 / 52.0 | 39.0 / 61.0 | 38.0 / 53.0 | 39.0 / 62.0 |
| Sound Pressure Level Indoor - min/max | dB(A) | 26 / 42 | 28 / 42 | 26 / 42 | 28 / 42 |
| Pipe Size (Liquid - Gas) | mm | 3/8" - 5/8" | 3/8" - 5/8" | 3/8" - 5/8" | 3/8" - 5/8" |
| Max Pipe Len. (Precharge) / Height Diff. | m | 30(30) / 30 | 30(30) / 30 | 30(30) / 30 | 30(30) / 30 |
| Additional Refrigerant Charge | g/m | 0 | 0 | 0 | 0 |
| Ref. Type (Global Warming Potential) | | R32(675) | R32(675) | R32(675) | R32(675) |
| Refrigerant Charge kg / CO2eq-T | | 1.90/ 1.283 | 2.4/ 1.620 | 1.9/ 1.283 | 2.4/ 1.620 |
| Power Source / Suggested Fuse Size | | 1Ph-230V-50Hz / 25 | 1Ph-230V-50Hz / 32 | 3Ph-400V-50Hz / 16 | 3Ph-400V-50Hz / 16 |
| t | | | | | |
| Remote Controller (UTYRNRZY3) | | | | | |
| Filter UTDLF25NA / Spigot UTDRF204 | | | | | |

System operating range, -10°C to 46°C Cooling -15°C to 24°C Heating

Standard Range Medium Static Pressure Ducted - Single Phase

Size 22 & 24, Static Pressure Range 30 to 150 PA, Standard 35Pa



Size 30, Static Pressure Range 30 to 150 PA, Standard 47Pa

| Indoor Unit Outdoor Unit | | ARXG22KMLA AOYG22KBTB | ARXG24KMLA AOYG24KBTB | ARXG30KMLA AOYG30KBTB |
|--|-------|--------------------------|--------------------------|--------------------------|
| Nominal Cooling Capacity (Range) | kW | 6.0 (0.9 - 6.7) | 6.8 (0.9 - 8.0) | 8.5 (2.8 - 10.0) |
| UK Cooling (Total / Sensible) | kW | 5.85 / 4.37 | 6.63 / 4.86 | 8.08 / 6.23 |
| Nominal Heating Capacity (Range) | kW | 7.0 (0.9 - 8.0) | 7.5 (0.9 - 9.1) | 10.0 (2.7 - 11.2) |
| UK Heating | kW | 6.91 | 7.86 | 9.63 |
| EER Cooling / COP Heating | | 3.37 / 3.74 | 3.18 / 3.80 | 3.21 / 3.80 |
| SEER / Energy Efficiency Class - Cooling | | 6.10 / A++ | 6.20 / A++ | 6.23 / A++ |
| SCOP / Energy Efficiency Class - Heating | | 4.10 / A+ | 4.10 / A+ | 4.00 / A+ |
| Annual Energy Consumption Cool / Heat | kWh/a | 344 / 1,637 | 384 / 2,045 | 477 / 2,797 |
| Pdesign Cooling / Heating (-10°C) | kW | 6.0 / 4.8 | 6.8 / 6.0 | 8.5 / 8.0 |
| Indoor Dimensions (H x W x D) | mm | 270x1,135x700 | 270x1,135x700 | 270x1,135x700 |
| Outdoor Dimensions (H x W x D) | mm | 632x799x290 | 716x820x315 | 788x940x320 |
| Weight Indoor / Outdoor | kg | 35.0 / 38.0 | 35.0 / 42.0 | 38.0 / 52.0 |
| Sound Pressure Level Indoor - min/max | dB(A) | 25 / 31 | 25 / 31 | 26 / 42 |
| Pipe Size (Liquid - Gas) | mm | 1/4" - 1/2" | 1/4" - 1/2" | 3/8" - 5/8" |
| Max Pipe Len. (Precharge) / Height Diff. | m | 30 (20) / 25 | 30 (20) / 25 | 50 (30) / 30 |
| Additional Refrigerant Charge | g/m | 20 | 20 | 40 |
| Ref. Type (Global Warming Potential) | | R32 (675) | R32 (675) | R32 (675) |
| Refrigerant Charge kg / CO2eq-T | | 1.25 / 0.844 | 1.25 / 0.844 | 1.90 / 1.283 |
| Power Source / Suggested Fuse Size | | 1Ph-230V-50Hz / 16 | 1Ph-230V-50Hz / 16 | 1Ph-230V-50Hz / 25 |

Remote Controller (UTYRNRZY3)
Filter UTDLF25NA / Spigot UTDRF204

System operating range, -15°C to 46°C Cooling -15°C to 24°C Heating

Standard Range Medium Static Pressure Ducted - Single & Three Phase

Size 36, Static Pressure Range 30 to 150 PA, Standard 47Pa



Size 45, Static Pressure Range 30 to 150 PA, Standard 60Pa

| Indoor Unit Outdoor Unit | | ARXG36KMLA AOYG36KBTB | ARXG45KMLA AOYG45KBTB | ARXG36KMLA AOYG36KRTA | ARXG45KMLA AOYG45KRTA |
|--|-------|--------------------------|--------------------------|--------------------------|--------------------------|
| Nominal Cooling Capacity (Range) | kW | 9.5 (2.8 - 11.2) | 12.1 (4.0 - 13.0) | 9.5 (2.8 - 11.2) | 12.1 (4.0 - 13.0) |
| UK Cooling (Total / Sensible) | kW | 9.03 / 6.83 | 11.54 / 8.64 | 9.03 / 6.83 | 11.54 / 8.64 |
| Nominal Heating Capacity (Range) | kW | 10.8 (2.7 - 12.7) | 13.5 (4.2 - 15.2) | 10.8 (2.7 - 12.7) | 13.5 (4.2 - 15.2) |
| UK Heating | kW | 10.92 | 13.83 | 10.92 | 13.83 |
| EER Cooling / COP Heating | | 3.20 / 3.75 | 2.87 / 3.52 | 3.20 / 3.75 | 2.87 / 3.52 |
| SEER / Energy Efficiency Class - Cooling | | 6.10 / A++ | 5.25 / - | 6.10 / A++ | 5.25 / - |
| SCOP / Energy Efficiency Class - Heating | | 4.00 / A+ | 3.63 / - | 4.00 / A+ | 3.63 / - |
| Annual Energy Consumption Cool / Heat | kWh/a | 545 / 3,044 | - / - | 545 / 3,044 | - / - |
| Pdesign Cooling / Heating (-10°C) | kW | 9.5 / 8.7 | - / - | 9.5 / 8.7 | - / - |
| Indoor Dimensions (H x W x D) | mm | 270x1,135x700 | 270x1,135x700 | 270x1,135x700 | 270x1,135x700 |
| Outdoor Dimensions (H x W x D) | mm | 788x940x320 | 998x940x320 | 788x940x320 | 998x940x320 |
| Weight Indoor / Outdoor | kg | 38.0 / 52.0 | 39.0 / 67.0 | 38.0 / 53.0 | 39.0 / 67.0 |
| Sound Pressure Level Indoor - min/max | dB(A) | 26 / 42 | 28 / 42 | 26 / 42 | 28 / 42 |
| Pipe Size (Liquid - Gas) | mm | 3/8" - 5/8" | 3/8" - 5/8" | 3/8" - 5/8" | 3/8" - 5/8" |
| Max Pipe Len. (Precharge) / Height Diff. | m | 50 (30) / 30 | 50 (30) / 30 | 50 (30) / 30 | 50 (30) / 30 |
| Additional Refrigerant Charge | g/m | 40 | 40 | 40 | 40 |
| Ref. Type (Global Warming Potential) | | R32 (675) | R32 (675) | R32 (675) | R32 (675) |
| Refrigerant Charge kg / CO2eq-T | | 1.90 / 1.283 | 2.70 / 1.823 | 1.90 / 1.283 | 2.70 / 1.823 |
| Power Source / Suggested Fuse Size | | 1Ph-230V-50Hz / 25 | 1Ph-230V-50Hz / 32 | 3Ph-400V-50Hz / 16 | 3Ph-400V-50Hz / 16 |

Remote Controller (UTYRNRZY3)
Filter UTDLF25NA / Spigot UTDRF204

System operating range, -15°C to 46°C Cooling -15°C to 24°C Heating